

State of Wyoming Corner Record

(In compliance with the CORNER PERPETUATION AND FILING ACT, Wyoming Statutes, 1977,
Section 36~11~101, et seq., and the Rules and Regulations of the Board of Registration for Professional
Engineers and Professional Land Surveyors)

The reverse side of this form may be used if more space is needed.

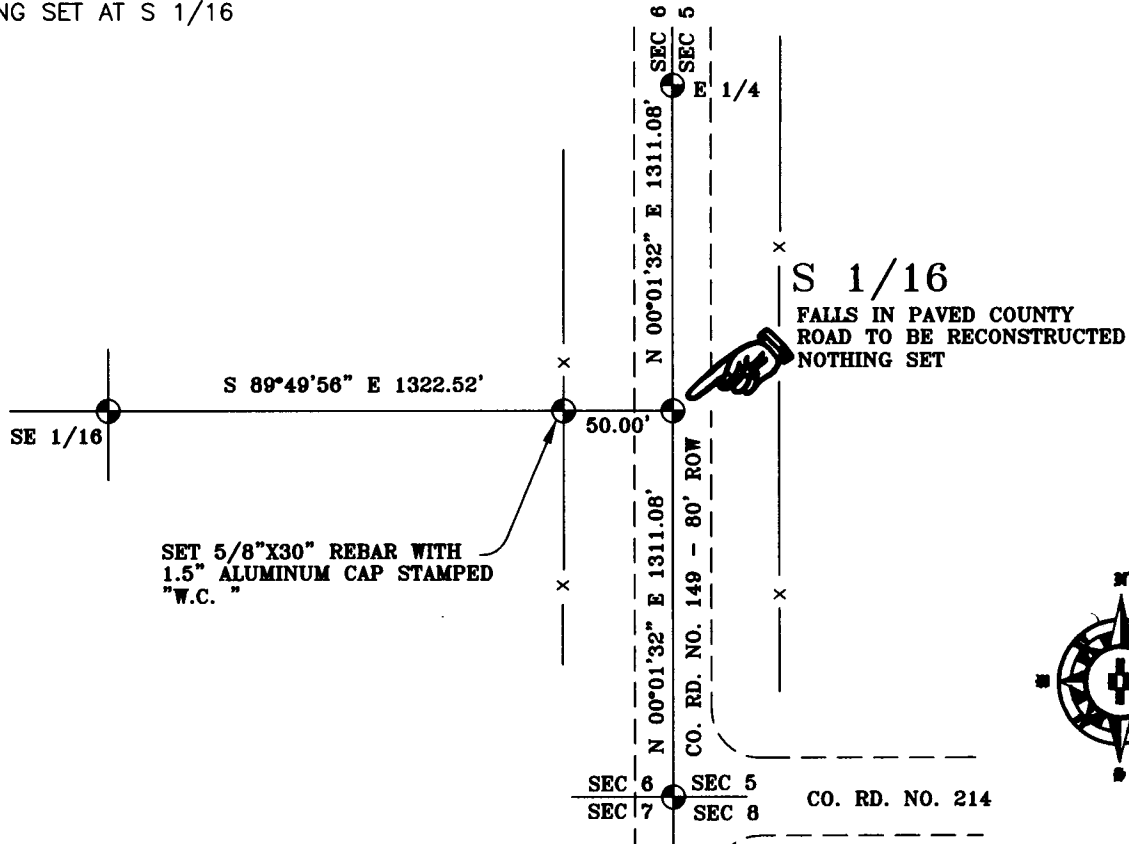
The Record of the original survey and the citation of the source of the historical information (if the corner is lost or obliterated). The description of the corner monummentation evidence as found and/or the monument and it's accessories as established to perpetuate the location of this corner. A sketch of the relative location of this Monument, accessories, and reference points with the course and distance to adjacent corner (s) (if determined during this Survey). The Method and Rationale used for the reestablishment of lost and obliterated corner.

GLO: NO RECORD

CORNER FALLS IN PAVED COUNTY ROAD

NOTHING SET AT S 1/16

RECORDED 5/14/2003 AT 3:02 PM REC# 352227 X# 1726 PG# 156
NEBRA K. LATHROP, CLERK OF LARAMIE COUNTY, WY PAGE 1 OF 1



Date of Field Work: FEB. 06, 2003

Office Reference: HART

Cross Index Diagram

	1	2	3	4	5	6	7	8	9	10	11	12	13	14	15	16	17	18	19	20	21	22	23	24	25
A																									
B																									
C																									
D																									
E																									
F																									
G																									
H																									
J																									
K																									
L																									
M																									
N																									
O																									
P																									
Q																									
R																									
S																									
T																									
U																									
V																									
W																									
X																									
Y																									
Z																									

Firm/Agency, Address
Terrestrial Surveying & Mapping Co.
"Your Friendly Neighborhood Surveyor"
 1127 Terry Ranch Road
 Cheyenne, Wyoming 82007
 Telephone Number: (307) 634~9360

This Corner Record was prepared by me or under my direction and supervision.

SEAL & SIGNATURE
Lawrence Perry L.S.
 Professional Land Surveyor
 Lawrence T. Perry
 3047
 Date *Feb 6 2003*
 WYOMING

Corner Name: S 1/16 Section: 6 T. 14 N. R. 62 W. 6th P.M. Cross Index No. D-5